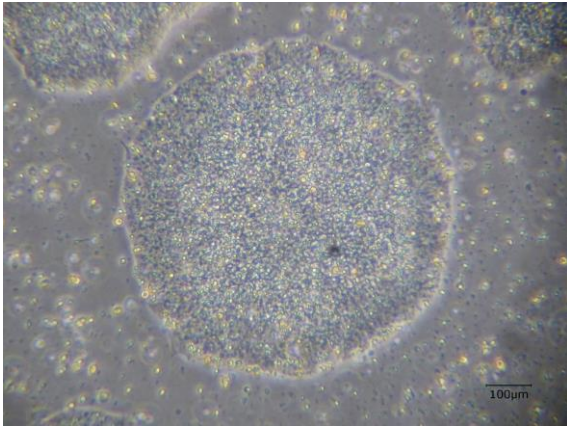
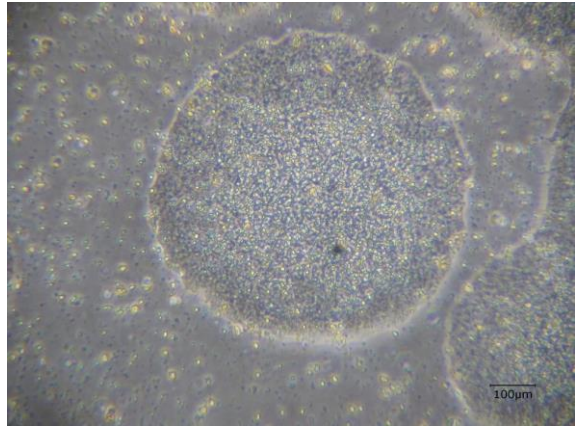


【 CiRA-j-1051 】 Morphology of iPSC colonies

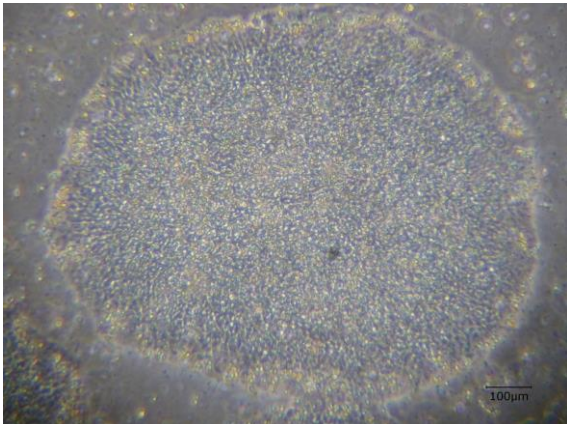
CiRA-j-1051-A: passage-3



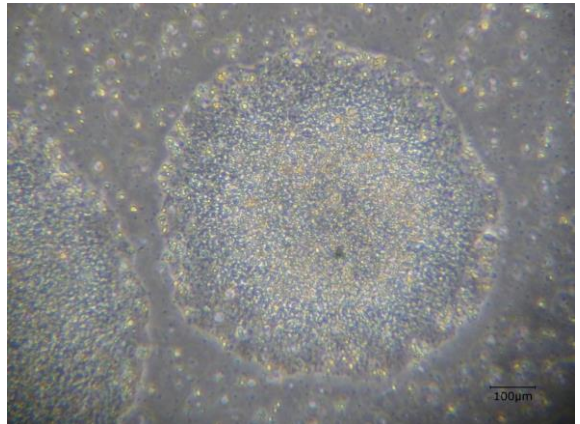
CiRA-j-1051-B: passage-3



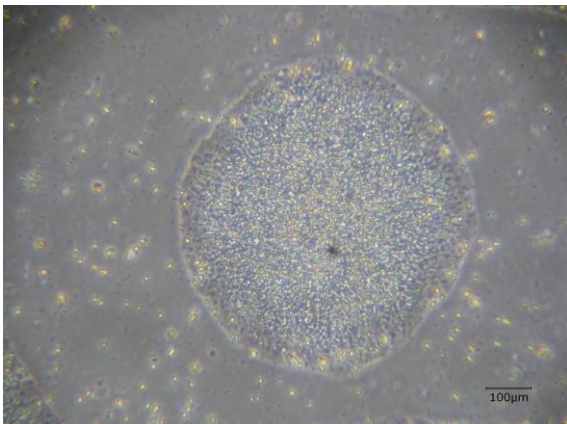
CiRA-j-1051-C: passage-3



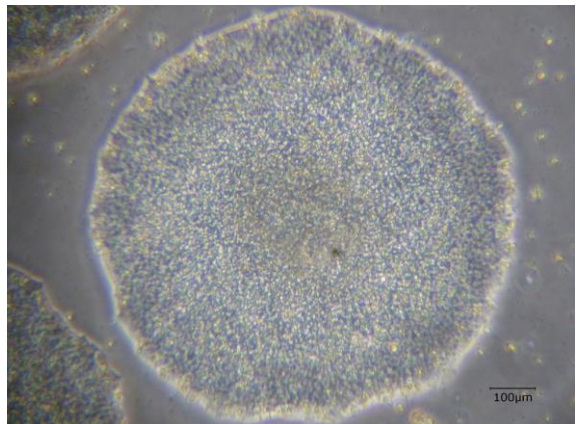
CiRA-j-1051-D: passage-3



CiRA-j-1051-E: passage-3



CiRA-j-1051-F: passage-3



(All images were captured at 4x magnification)